

# Masterweld MI STYLE MIG Guns



Series Product Information & Specs Part Number

## CONSTRUCTOR MI STYLE



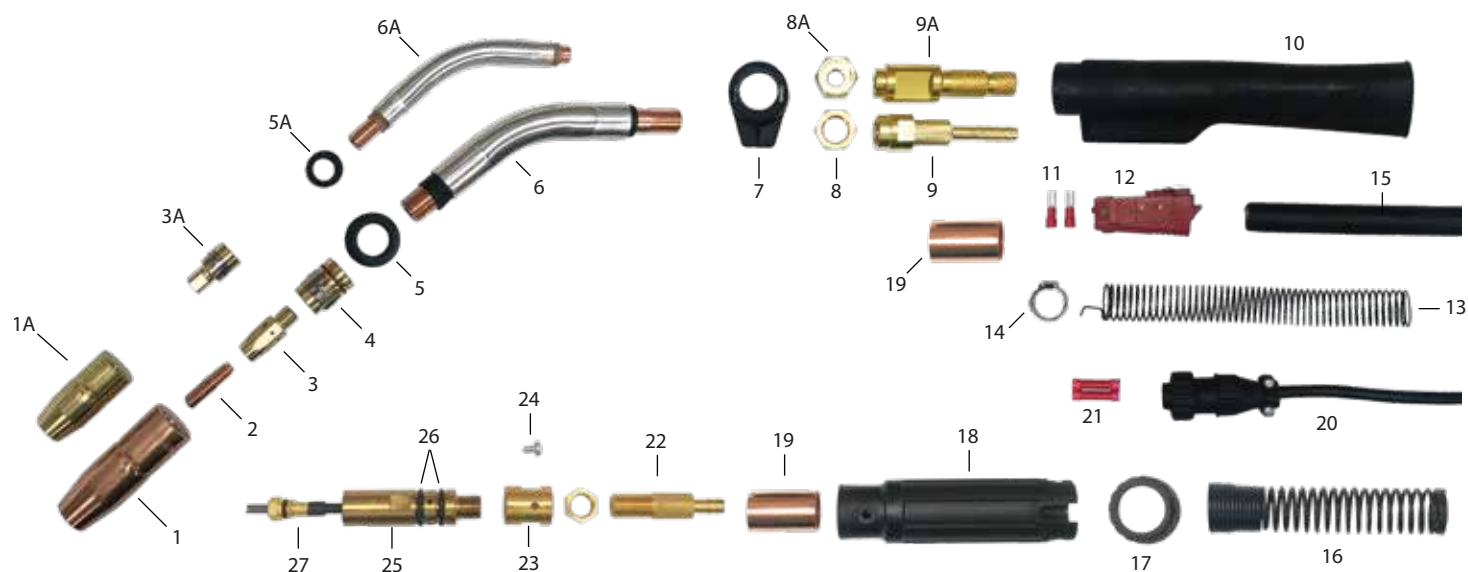
MIG Gun M10 .030-.035" 150A 10'	MW	195-605
MIG Gun M10 LWM .030-.035" 10'	MW	195-605-LWM
MIG Gun H10 .030-.035" 10'	MW	195-605-H
MIG Gun M10 .030-.035" 12'	MW	195-606
MIG Gun M10 .030-.035" 15'	MW	195-607
MIG Gun H10 .030-.035" 15'	MW	195-607-H
MIG Gun M15 .030-.035" 180A 10'	MW	169-589
MIG Gun M15 LWM .030-.035" 10'	MW	169-589LWM
MIG Gun M15 .030-.035" 12'	MW	169-591
MIG Gun M15 .030-.035" 15'	MW	169-593
MIG Gun M15 LWM .035-.045" 15'	MW	169-593LWM
MIG Gun M25 .030-.035" 250A 10'	MW	169-594
MIG Gun M25 .030-.035" 12'	MW	169-596
MIG Gun M25 .030-.035" 15'	MW	169-598
MIG Gun M25 LWM .030-.035" 15'	MW	169-598LWM
MIG Gun M25 .035-.045" 15'	MW	169-599
MIG Gun M25 LWM .035-.045" 15'	MW	169-599LWM
MIG Gun M25 .030-.035" 20'	MW	169-597
MIG Gun M25 .030-.035" 25'	MW	169-600
MIG Gun M40 .035-.045" 400A 10'	MW	169-602
MIG Gun M40 .035-.045" 12'	MW	169-604
MIG Gun M40 .035-.045" 15'	MW	169-606
MIG Gun M40 .035-.045" 20'	MW	169-607
MIG Gun M40 .035-.045" 25'	MW	169-608



Any gun can be made with nearly any power pin upon request.

	MODEL M10, M15		MODEL M25		MODEL M40	
	%	Amps	%	Amps	%	Amps
Duty Cycle Using						
CO <sub>2</sub>	100	180	100	250	100	400
Mixed Gas	100	115	100	200	100	275

# REPLACEMENT GUNS AND PARTS SUITABLE FOR MILLER STYLE MIG GUNS



Item	Description	Inches	Millimeters	Part Number	Item	Description	Part Number
1A	Nozzle 1/2" Flush Tip M10, M15	1/2"	12mm	MW 169-715	7	Handle Locking Nut	MW 210-6
1	Nozzle 1/2" Recess 1/8" M25	1/2 / 1/8"	12mm/3.2mm	MW 169-724	8A	Jamb Nut M10, M15	MW 158-8
	Nozzle 5/8" Recess 1/8" M25	5/8 / 1/8"	16mm/3.2mm	MW 169-725	8	Jamb Nut M25	MW 208-2
	Nozzle 5/8" Flush Tip M25	5/8"	16mm	MW 169-726	9A	Cable End Fitting Front M10,15	MW CETRGF130
	Nozzle 5/8" Stickout 1/8" M25	5/8 / 1/8"	16mm/3.2mm	MW 169-727	9	Cable End Fitting Barb M25	MW CETR-S
2	Contact Tip 0.023" M10, M15, M25	0.023"	0.6mm	MW 087-299	10	Handle Front/Rear	MW 210-5
	Contact Tip 0.030" M10, M15, M25	0.030"	0.8mm	MW 000-067	11	Elect Terminal Female Flat	MW ETFMFS
	Contact Tip 0.035" M10, M15, M25	0.035"	0.9mm	MW 000-068	12	Switch MI M10,15,25	MW 227798
	Contact Tip 0.045" M10, M15, M25	0.045"	1.1mm	MW 000-069	13	Strain Relief, Cable, MI	MW 169-741
3A	Tip Adaptor M10, M15			MW 169-716	14	Clamp Oetiker 13.8-15.7mm	MW OC157
3	Tip Adaptor M25			MW 169-728	15	MIG Power Cable 250A	MW MPC200
4	Nozzle Retainer M25			MW 169-729		MIG Power Cable 180A	MW MPC150
5A	Shock Washer suit M10,M15			MW 169-717	16	Cable Support Spring	MW 141-4S
5	Shock Washer suit M25			MW 169-730	17	Adaptor Support Nut Small	MW ASN15S
6	Gooseneck 60° M25			MW 169-731	18	Adaptor Support Small	MW AS15S
6A	Gooseneck 60° M10, M15			MW 169-718	19	Ferrule Copper Tube 3/4X1 1/2"	MW F1931
NS	Gooseneck 60° M40			MW 169-744	20	Electrical 2 Pin Plug MI Wire Joiner	MW 206429-1
27	Liner 15', M10, M15, M25, M40	.023-.030"	0.6-0.8mm	MW 194-010	21	Electrical Terminal	MW ETWJ
	Liner 15', M10, M15, M25, M40	.030-.035"	0.8-0.9mm	MW 194-011	22	Cable End Small Barb	MW CEBSB
	Liner 15', M10, M15, M25, M40	.035-.045"	0.9-1.1mm	MW 194-012	23	Brass Nut M12 X 1 for CEBSB	MW DCE12N
	Liner 15', M10, M15, M25, M40	1/16-5/64"	1.6-2.0mm	MW 194-013	24	Handle Screw (M4x1x6)	MW MHS-6
	Liner Teflon for Aluminum M10, M15, M25, M40	3/64"	1.2mm	MW 194-014	24	Machine Adaptor for Tregaskiss	MW MAEF-S
	Liner 25', M10, M15, M25, M40	.035-.045"	0.9-2.0mm	MW 194-015	25	Machine Plug Tregaskiss/Miller	MW MPM
	Liner 25', M10, M15, M25, M40	.045-1/16"	1.1-1.6mm	MW 194-016	26	O'Ring for Miller Machine Plug	MW ORMDC
					28	O'Ring for Miller Style Liners	MW 079-975

**Pennsylvania**  
3962 Portland Street  
Coplay, PA 18037

**inweldcorporation.com**  
Phone: 800.346.5368  
Fax: 877.346.5368  
© Inweld Corporation

**Texas**  
9300 Lawndale St.  
Houston, TX 77012