

# Masterweld TW1 & FAB

## 250 MIG Gun



Series

Product Information & Specs

Part Number

### TW1 CONSTRUCTOR & FAB 250 180 AMP



ANY GUN CAN BE MADE WITH NEARLY ANY POWER PIN UPON REQUEST.

MIG Gun TW1 .030-.035" 180A 10'	MW	110-3035
MIG Gun TW1 .030-.035" 10' Lincoln	MW	L110-3035
MIG Gun TW1 .030-.035" 10" Lincoln Wirematic	MW	LWM110-3035
MIG Gun TW1 .030-.035" 10' Miller	MW	M110-3035
MIG Gun TW1 .030-.035" 10' Euro	MW	X110-3035
MIG Gun TW1 .030-.035" 10' Hobart	MW	H110-3035
MIG Gun TW1 .030-.035" 180A 12'	MW	112-3035
MIG Gun TW1 .030-.035" 12' Lincoln	MW	L112-3035
MIG Gun TW1 .030-.035" 12' Lincoln Wirematic	MW	LWM112-3035
MIG Gun TW1 .030-.035" 12' Miller	MW	M112-3035
MIG Gun TW1 .030-.035" 12' Euro	MW	X112-3035
MIG Gun TW1 .030-.035" 12' Hobart	MW	H112-3035
MIG Gun TW1 .030-.035" 180A 15'	MW	115-3035
MIG Gun TW1 .030-.035" 15' Lincoln	MW	L115-3035
MIG Gun TW1 .030-.035" 15' Lincoln Wirematic	MW	LWM115-3035
MIG Gun TW1 .030-.035" 15' Miller	MW	M115-3035
MIG Gun TW1 .040-.045" 15' Miller	MW	M115-4045
MIG Gun TW1 .030-.035" 15' Euro	MW	X115-3035
MIG Gun TW1 .030-.035" 15' Hobart	MW	H115-3035
MIG Gun TW1 .030-.035" 180A 20'	MW	120-3035
MIG Gun TW1 .030-.035" 20' Lincoln	MW	L120-3035
MIG Gun TW1 .030-.035" 20' Lincoln Wirematic	MW	LWM120-3035
MIG Gun TW1 .030-.035" 20' Miller	MW	M120-3035
MIG Gun TW1 .040-.045" 20' Miller	MW	M120-4045
MIG Gun TW1 .030-.035" 20' Euro	MW	X120-3035
MIG Gun TW1 .030-.035" 180A 25'	MW	125-3035
MIG Gun TW1 .030-.035" 25' Lincoln	MW	L125-3035
MIG Gun TW1 .030-.035" 25' Lincoln Wirematic	MW	LWM125-3035
MIG Gun TW1 .030-.035" 25' Miller	MW	M125-3035
MIG Gun TW1 .040-.045" 25' Miller	MW	M125-4045
MIG Gun TW1 .030-.035" 25' Euro	MW	X125-3035
MIG Gun TW2 FAB 250 .040-.045" 250A 10' Lincoln	MW	LFAB210-4045
MIG Gun TW2 FAB 250 .030-.035" 250A 10' Lincoln (Bell Housing)	MW	LPFAB210-3035
MIG Gun TW2 FAB 250 .030-.035" 250A 10' Lincoln Wirematic	MW	LWMFAB210-3035
MIG Gun TW2 FAB 250 .030-.035" 250A 10' Miller	MW	MFAB210-3035
MIG Gun TW2 FAB 250 .030-.035" 250A 12' Hobart	MW	HFAB212-3035
MIG Gun TW2 FAB 250 .030-.035" 250A 12' Lincoln (Bell Housing)	MW	LPFAB212-3035
MIG Gun TW2 FAB 250 .040-.045" 250A 12' Lincoln (Bell Housing)	MW	LPFAB212-4045
MIG Gun TW2 FAB 250 .030-.035" 250A 12' Lincoln Wirematic	MW	LWMFAB212-3035
MIG Gun TW2 FAB 250 .040-.045" 250A 12' Lincoln Wirematic	MW	LWMFAB212-4045
MIG Gun TW2 FAB 250 .030-.035" 250A 12' Miller	MW	MFAB212-3035
MIG Gun TW2 FAB 250 .040-.045" 250A 12' Miller	MW	MFAB212-4045
MIG Gun TW2 FAB 250 .030-.035" 250A 12' Euro	MW	XFAB212-3035
MIG Gun TW2 FAB 250 .030-.035" 250A 15'	MW	FAB215-3035
MIG Gun TW2 FAB 250 .040-.045" 250A 15'	MW	FAB215-4045
MIG Gun TW2 FAB 250 .030-.035" 250A 15' Lincoln	MW	LFAB215-3035
MIG Gun TW2 FAB 250 .030-.035" 250A 15' Lincoln (Bell Housing)	MW	LPFAB215-3035
MIG Gun TW2 FAB 250 .040-.045" 250A 15' Lincoln (Bell Housing)	MW	LPFAB215-4045
MIG Gun TW2 FAB 250 .030-.035" 250A 15' Lincoln Wirematic	MW	LWMFAB215-3035
MIG Gun TW2 FAB 250 .040-.045" 250A 15' Lincoln Wirematic	MW	LWMFAB215-4045
MIG Gun TW2 FAB 250 .030-.035" 250A 15' Miller	MW	MFAB215-3035
MIG Gun TW2 FAB 250 .040-.045" 250A 15' Miller	MW	MFAB215-4045
MIG Gun TW2 FAB 250 .030-.035" 250A 15' Euro	MW	XFAB215-3035
MIG Gun TW2 FAB 250 .040-.045" 250A 15' Euro	MW	XFAB215-4045
MIG Gun TW2 FAB 250 .030-.035" 250A 20' Miller	MW	MFAB220-3035
MIG Gun TW2 FAB 250 .040-.045" 250A 25' Lincoln Wirematic	MW	LWMFAB225-4045
MIG Gun TW2 FAB 250 .040-.045" 250A 25' Miller	MW	MFAB225-4045
MIG Gun TW2 FAB 250 .040-.045" 250A 25' Euro	MW	XFAB225-4045

MODEL TW1		
Duty Cycle Using	%	Amps
CO <sub>2</sub>	100	180
Mixed Gas	100	115

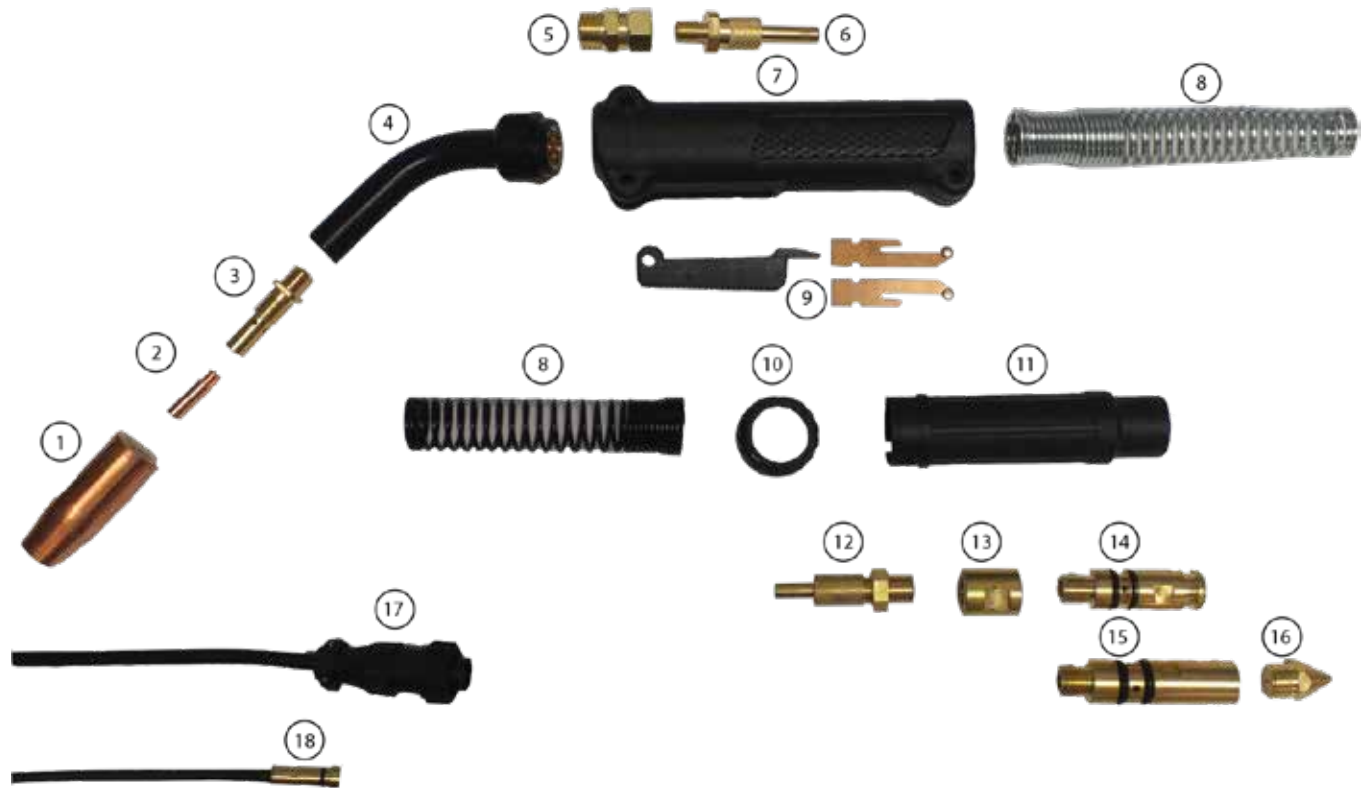
MODEL FAB 250		
Duty Cycle Using	%	Amps
CO <sub>2</sub>	100	250
Mixed Gas	100	160

**Pennsylvania**  
3962 Portland Street  
Coplay, PA 18037

**Inweldcorporation.com**  
**Phone: 800.346.5368**  
**Fax: 877.346.5368**  
© Inweld Corporation

**Texas**  
9300 Lawndale St.  
Houston, TX 77012

# REPLACEMENT GUNS & PARTS SUITABLE FOR TWECO STYLE MIG GUNS



Item	Description	Inches	Millimeters	Part Number	Item	Description	Part Number
1	Nozzle Standard	1/2"	12mm	MW 21-50	5	Power Cable	MW TW1PCC
	Nozzle Standard	5/8"	16mm	MW 21-62		Connection TW1	
	Nozzle Flush	1/2"	12mm	MW 21-50F	6	Cable End 10mm	MW CEBSB-10
	Nozzle Flush	5/8"	16mm	MW 21-62F	7	Handle	MW 81
2	Contact Tip Std Duty	0.023"	0.6mm	MW 11-23		w/Screws TW1	
	Contact Tip Std Duty	0.030"	0.8mm	MW 11-30	8	Cable Support	MW 141-6S
	Contact Tip Std Duty	0.035"	0.9mm	MW 11-35		Spring TW1	
	Contact Tip Std Duty	0.040"	1.0mm	MW 11-40	9	Trigger	MW 91
	Contact Tip Std Duty	0.045"	1.1mm	MW 11-45		w/ Blades TW1	
	Contact Tip HD	0.030"	0.8mm	MW 11H-30	10	Adaptor	MW ASN15S
	Contact Tip HD	0.035"	0.9mm	MW 11H-35		Support Nut	
	Contact Tip HD	0.040"	1.0mm	MW 11H-40	11	Adaptor Support	MW AS15S
	Contact Tip HD	0.045"	1.1mm	MW 11H-45	12	Cable End Small	MW CEBSB
	Contact Tip HD	0.046"	1.2mm	MW 11AH-364	13	Machine Adaption	MW MAEF-5
	(Alum)					End Fitting	
3	Gas Diffuser (Tip Holder)			MW 51-23	14	Machine Plug	MW M174DC-TW
	Gas Diffuser (Tip Holder)			MW 51		-LWM/Tweco	
4	Conductor Tube Assy			MW 61-60	15	Machine Plug	MW MPMTW4
	Insulator-Conductor Tube			MW 71		-Miller	
18	Conduit Assy (Liner) 15'/4.5m	.030"-.035"	0.6-1.0mm	MW 42-3035-15	16	Miller Tip	MW MPMT-2
	Conduit Assy (Liner) 15'/4.5m	.040"-.045"	1.0-1.1mm	MW 42-4045-15	17	Electrical Plug	MW 206429-1
	Conduit Assy (Liner)	.040"-.045"	1.0-1.1mm	MW 42N-4045-15		-Miller	
	Nylon 15'/4.5m						
	Conduit Assy (Liner) 15'/4.5m	0.023"	0.6mm	MW 42-23-15			
	MI Style Conduit						
	(Liner) 15'/4.5m	.030"-.035"	0.6-1.0mm	MW 194-011			

**inweldcorporation.com**  
**Phone: 800.346.5368**  
**Fax: 877.346.5368**  
 © Inweld Corporation

